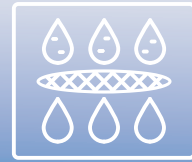


 COMMERCIAL

HIGH-PURITY WATER SYSTEMS



*Water Control Corporation
An Employee-Owned Company*

CONCEPT TO COMMISSIONING: HIGH PURITY WATER MADE SIMPLE

WATER CONTROL IS YOUR ONE-STOP PROVIDER FOR CUSTOM-BUILT, HIGH-PURITY WATER (RO/DI) SYSTEMS.

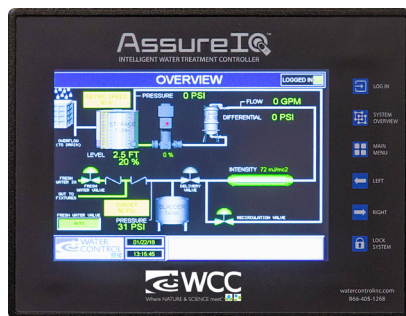
With over 45 years of experience in specialty water filtration solutions, we know exactly what's involved in getting a customized system built and running. From initial water testing, to 3D design, spec-writing, and on-site commissioning, our team of experienced technicians takes the time to ensure that every detail is addressed. This is high-purity water made simple!

COUNT ON US FOR:

- Water testing services
- Project analysis and design (including site visits)
- Specification writing and BIM (Revit™) renditions
- Detailed project submittals
- Quality system fabrication and testing
- Delivery, startup, and commissioning services

We understand the complex commercial construction process, including the extensive documentation required to bring your project to fruition. We also offer a wide array of BAS integration options.

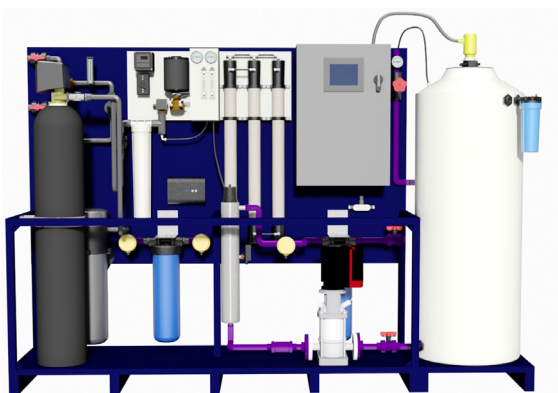
STANDARD ASSURE IQ™ CONTROLLER



- Programmable Logic Controller
- Animated HMI touchscreen
- Component status and setpoint
- Multiple user logins
- Electronic maintenance reminders
- BAS integration (Modbus ready, BACnet upgradable)
- Trending information
- System alarms
- Extreme versatility for various operation requirements

WATER CONTROL SELECTS HIGH-QUALITY COMPONENTS FROM LEADING TECHNOLOGY PARTNERS, THEN CUSTOM-FABRICATES THEM INTO COMPLETE "PLUG-AND-PLAY" PACKAGES THAT REQUIRE SIMPLE WATER, DRAIN, AND ELECTRICAL CONNECTIONS. WE THOROUGHLY TEST EACH OF OUR SYSTEMS PRIOR TO DELIVERY.

2000 gallon per day RO/DI system



ORIGINAL PLAN DESIGN



ACTUAL INSTALLATION

COMPLETE HIGH-PURITY WATER PACKAGES



PRE-TREATMENT

- Temperature regulation
- Backflow prevention
- Softening
- Chemical feed
- Chlorine removal
- TOC reduction

PRODUCTION

- 100 - 200,000 GPD systems
- Nanofiltration and desalination options
- Concentrate recycle
- Low energy and high output membrane options
- DI polishing

STORAGE

- 20 - 10,000 gallon tanks
- Hydropneumatic tank options
- Standard and cone-bottom
- Air filtration
- HDPE and Polypropylene

DELIVERY

- Variable speed and DOL pumps
- Loop pressure controls
- UV treatment
- Sub-micron filtration
- Redundant pump options

CONTROLS

- Standard and PLC/touchscreen panels
- NEMA options
- Single point electrical connections
- BAS system integration

COMMON HIGH-PURITY (RO/DI) WATER APPLICATIONS

- Medical sterilization equipment
- Humidification
- Laboratories
- Industrial / Manufacturing
- Ice and drinking water production
- Boiler feed
- Steam systems / Misting equipment
- Vehicle wash



CONTACT YOUR LOCAL
SALES REPRESENTATIVE

To find your authorized WCC representative,
please visit: [www.watercontrolinc.com/
representative-locator/](http://www.watercontrolinc.com/representative-locator/).



VISIT US ONLINE

Go to www.watercontrolinc.com, where
you'll find detailed product specification
info and application design questionnaires.



SPEAK DIRECTLY WITH ONE OF
WCC'S DESIGN ENGINEERS

Call 1-866-405-1268 or email
techsupport@watercontrolinc.com.

We look forward to working with you!