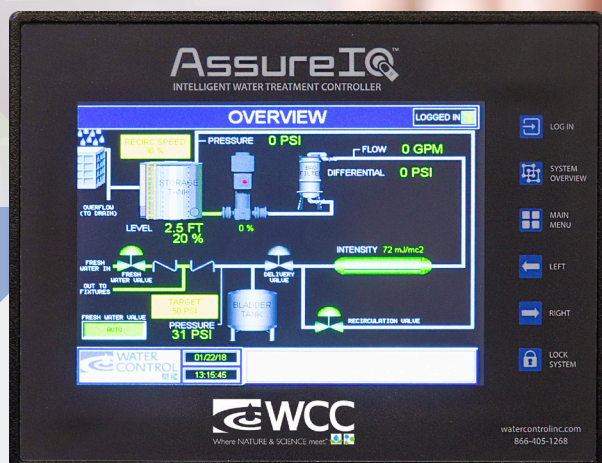


TOUCHSCREEN PLC CONTINUOUS SYSTEM OPTIMIZATION



AssureIQ™

INTELLIGENT WATER TREATMENT CONTROLLER

PROGRAMMABLE LOGIC CONTROLLER

- Enhanced water treatment system operation
- Easy equipment integration

ANIMATED HMI TOUCHSCREEN

- System status at a glance
- Intuitive programming and troubleshooting

COMPONENT DETAIL SCREENS

- Monitoring of individual component functionality
- Simple adjustment of operating parameters

MULTIPLE USER LOGINS

- Different levels of access for various operators
- Secure setpoint protection

ELECTRONIC MAINTENANCE REMINDERS

- Programmable schedules for individual components
- Email/text reminders to maintenance staff

BAS INTEGRATION

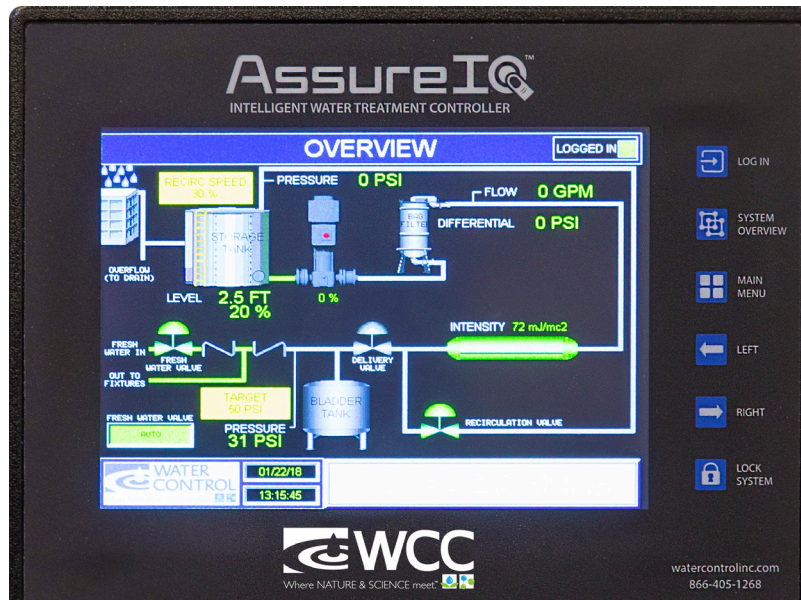
- 2-Way Communication, utilizing multiple protocols
- System-wide networking options

TRENDING INFORMATION

- Graphical monitoring of system operation
- Streamlined troubleshooting and service

SYSTEM ALARMS

- Current and historical alarm data
- Email/text alerts to staff (option)



CONTACT YOUR LOCAL
SALES REPRESENTATIVE

To find your authorized WCC representative,
please visit: [www.watercontrolinc.com/
representative-locator/](http://www.watercontrolinc.com/representative-locator/).



VISIT US ONLINE

Go to www.watercontrolinc.com, where
you'll find detailed product specification
info and application design questionnaires.



SPEAK DIRECTLY WITH ONE OF
WCC'S DESIGN ENGINEERS

Call 1-866-405-1268 or email
techsupport@watercontrolinc.com.

We look forward to working with you!

Water Control Corporation
7150 143rd Ave NW • Ramsey, MN 55303
1-866-405-1268 • www.watercontrolinc.com
WC-ASIQ © Water Control Corporation 0222

