

 COMMERCIAL

WATER RECLAMATION



Conforms to UL STD 979
Water Treatment Appliances
Certified to CSA STD C22.2 No. 68
Motor-Operated Appliances



*Water Control Corporation
An Employee-Owned Company*

CONCEPT TO COMMISSIONING: WATER RECLAMATION MADE SIMPLE

WATER CONTROL IS YOUR ONE-STOP PROVIDER FOR CUSTOM-BUILT WATER RECLAMATION SYSTEMS.

With over 45 years of experience in specialty water treatment solutions, we have the technical knowledge, expertise, and equipment needed to get your non-potable water recycling project off-the-ground. From initial site analysis, to 3D design, spec-writing, and on-site commissioning, our team of qualified technicians will ensure that every detail is addressed. This is water reclamation made simple!

SYSTEM OVERVIEW

- Packaged, skid-mounted, turnkey water recycling systems simplify installation and maintenance
- Ultraviolet, Ozone, or Chemical treatment systems protect quality of water being delivered to fixtures/equipment and in storage tank
- Sensors and actuated valves ensure that only safe, sanitary recycled water is delivered – and that a backup supply is readily available when this is not possible
- Advanced Programmable Logic Controller (PLC) with Human-Machine Interface (HMI) and Building Automation System connectivity provides versatile control and monitoring

WATER RECLAMATION SYSTEMS <small>(Note: Larger systems available upon request.)</small>								
Model*	Delivery Flow Rate (GPM)	Max Discharge Pressure (PSI)	Dimensions (in) (L X W X H)	Voltage/Phase	Max Amp Draw**	Pump HP	Connection Sizes (in)	Weight (lb) (Estimated)
WCC-RW-___-20	20	100	74 X 24 X 76	460 / 3	4.5	3	1 1/4	700
WCC-RW-___-40	40	100	74 X 24 X 76	460 / 3	7	5	1 1/2	900
WCC-RW-___-80	80	100	84 X 29 X 76	460 / 3	12	10	2	1150
WCC-RW-___-120	120	100	96 X 32 X 80	460 / 3	18.5	15	3	1700
WCC-RW-___-160	160	100	126 X 34 X 82	460 / 3	18.5	15	3	1900

* Insert desired disinfection system type: "CL" for chemical injection, "OZ" for ozone or "UV" for ultraviolet.

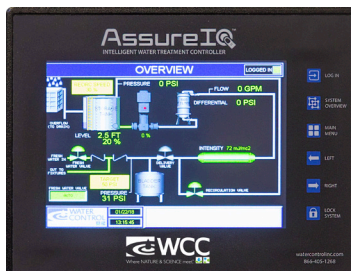
** Values represent maximum electrical draw. Actual max amp draw may be lower, based on disinfection type.



Conforms to UL STD 979
Water Treatment Appliances

Certified to CSA STD C22.2 No. 68
Motor-Operated Appliances

WATER CONTROL SELECTS HIGH-QUALITY COMPONENTS FROM LEADING TECHNOLOGY PARTNERS, THEN CUSTOM-FABRICATES THEM INTO COMPLETE, "PLUG-AND-PLAY" PACKAGES THAT REQUIRE SIMPLE WATER, DRAIN, AND ELECTRICAL CONNECTION. WE THOROUGHLY TEST THE OPERATION AND INTEGRITY OF EACH OF OUR SYSTEMS PRIOR TO DELIVERY.



STANDARD ASSURE IQ™ CONTROLLER

- Programmable Logic Controller
- Animated HMI touchscreen
- Component status and setpoint
- Multiple user logins
- Electronic maintenance reminders
- BAS integration (Modbus ready, BACnet upgradable)
- Trending information
- System alarms
- Extreme versatility for various operation requirements

STANDARD FEATURES ON ALL WCC-RW SYSTEMS

- Automated disinfection with monitoring (UV Dosage or ORP) and fail-safe alarm protection
- Monitored, easy-to-service filters
- Variable speed pump with ultra-efficient, electronically-commutated (ECM) motor (up to 15 Hp*)
- Storage tank level monitoring
- Tank recirculation/treatment system to counter stagnation and biological growth
- Fresh water bypass mechanism for connection to potable or municipal reclaimed water supply**
- Sensors and alarms for protection from blockages, broken pipes, chemical shortages, and more
- Submersible pump enable/disable control for suction lift applications
- Auxiliary power and controls for optional dye/chemical injection
- In-tank accessories including check valves and suction line strainers
- Single-point, 480V/3-phase electrical connection

*Pump motors above 15 Hp to include standard, integral VFD's

**Backflow protection required, per local code

SYSTEM OPTIONS

AVAILABLE CONFIGURATIONS:

- UV disinfection with up to 3 monitored lamps
- Ozone (O₃) disinfection with ORP control
- Sodium Hypochlorite (CL) disinfection with ORP control
- "Recirculation-only" (RC) packages (delivery by separate booster pump)
- Auxiliary tanks and injector pumps for residual disinfectant or dye
- Self-backwashing (ACF) filters in lieu of standard bag filters



WCC-RW-UV-40



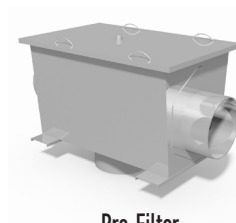
Storage Tanks

STORAGE TANKS AVAILABLE FROM WATER CONTROL:

- Above-ground polyethylene (HDPE) up to 10,000 gallons
- Below-ground polyethylene (HDPE) up to 2,500 gallons
- Below-ground reinforced fiberglass up to 50,000 gallons
- Above-ground galvanized with PVC lining, up to 70,000 gallons

ADDITIONAL COMPONENTS AVAILABLE FROM WATER CONTROL:

- Pre-filters (vortex, sieving, and mechanical separators)
- Backflow prevention (Reduced Pressure Zone assemblies and air-gap systems)
- Packaged booster pumps (for higher-demand or higher elevation projects)
- Submersible pumps, controls, and accessories for suction-lift applications



Pre-Filter

THE WCC DIFFERENCE

- Easy-to-use system design questionnaires
- 3D (Revit®) renditions for every system
- Custom AIA Division 22 specifications
- Detailed project submittals
- Project-specific installation diagrams
- Intuitive, adaptable controls
- Complete, customized 'Operation and Maintenance' manuals



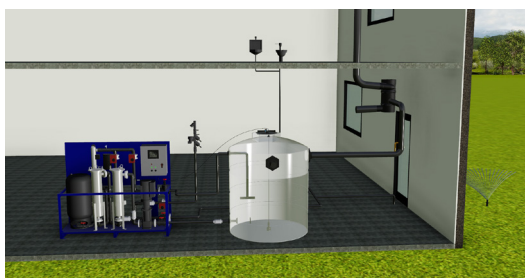
UV System Installation



OZ System Revit® Rendition



Customized 'Operation and Maintenance' Manual



Project-Specific Installation Diagram



CONTACT YOUR LOCAL
SALES REPRESENTATIVE

To find your authorized WCC representative,
please visit: [www.watercontrolinc.com/
representative-locator/](http://www.watercontrolinc.com/representative-locator/).



VISIT US ONLINE

Go to www.watercontrolinc.com, where
you'll find detailed product specification
info and application design questionnaires.



SPEAK DIRECTLY WITH ONE OF
WCC'S DESIGN ENGINEERS

Call 1-866-405-1268 or email
techsupport@watercontrolinc.com.

We look forward to working with you!