



# High-Purity Water Systems

From Concept to Commissioning

# High-purity water made simple

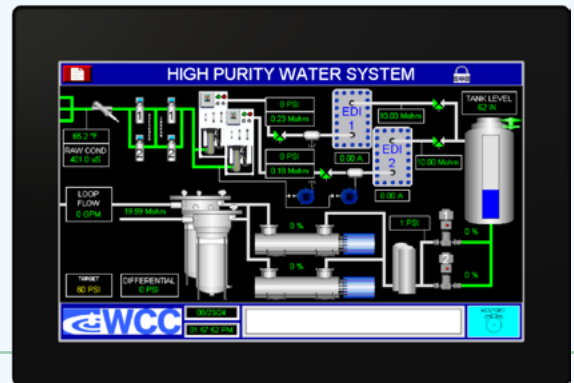
## Your one-stop provider for custom-built, high-purity water systems

With over 50 years of experience in high-purity and ultrapure water solutions, WCC knows exactly what's required to get a highly customized system built and operating. We cover everything from initial water analysis, to 3D design, spec writing, ISO9001 fabrication/testing, and on-site commissioning. Our team of experienced engineers and technicians takes the time to ensure that every detail is addressed. This is purified water made simple!

### Count on us for:

- ◆ Water testing services
- ◆ Project analysis and design (including site visits)
- ◆ Specification writing and BIM (Revit™) renditions
- ◆ Detailed project submittals
- ◆ Quality system fabrication and testing
- ◆ Delivery, startup, and commissioning services
- ◆ Service and maintenance

We understand the complex commercial construction process, including the extensive documentation required to bring your project to fruition. We also offer a wide array of BAS integration options.



### Standard Assure IQ™ Controller

- ◆ Programmable Logic Controller
- ◆ Animated HMI touchscreen
- ◆ Component status and setpoint
- ◆ Multiple user logins
- ◆ Electronic maintenance reminders
- ◆ Plug-and-play BAS integration (BACnet, Modbus, and other protocols)

### 2000 gallons per day RO/DI system

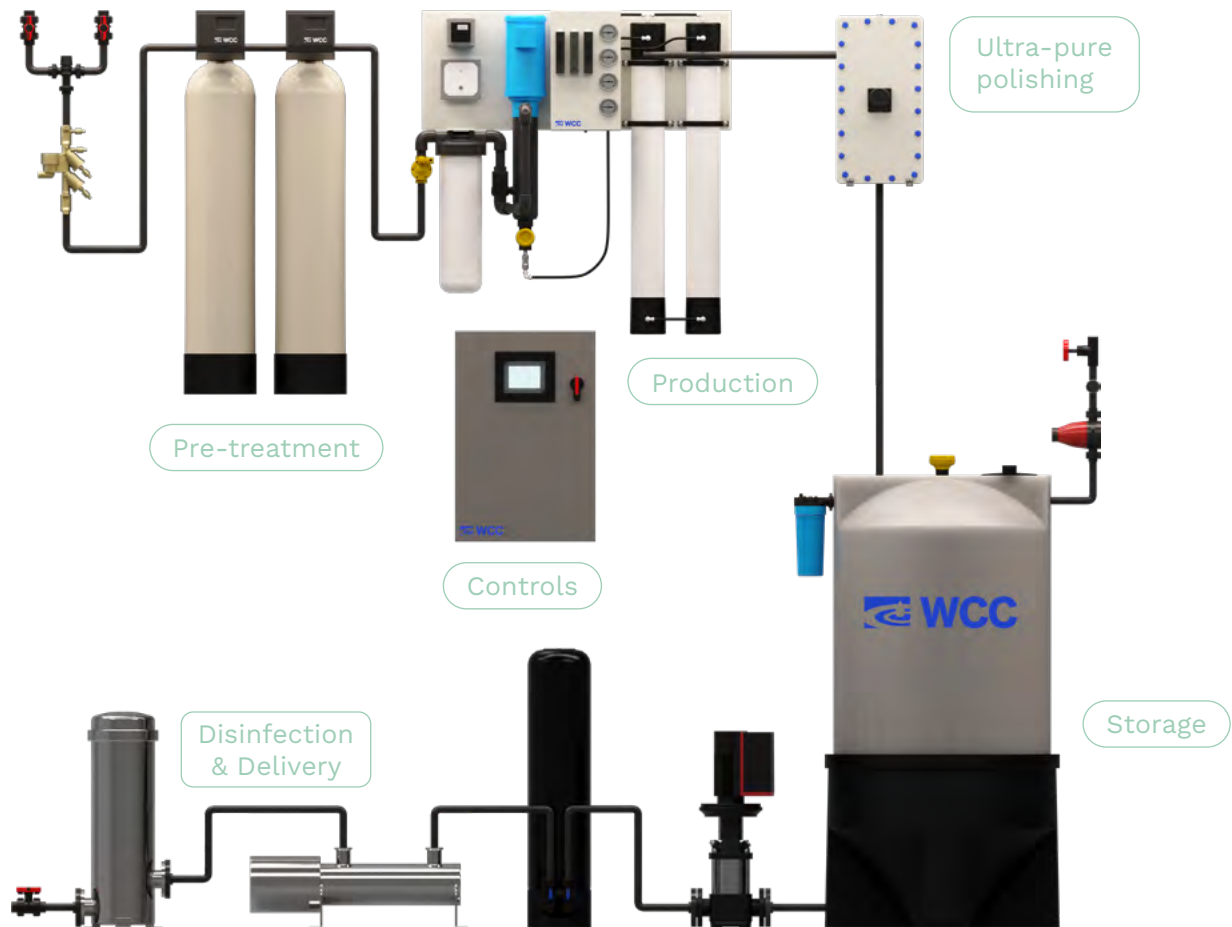


Original plan design



Actual system

# Complete high-purity water packages



## Pre-treatment

- ◆ Temperature regulation
- ◆ Backflow prevention
- ◆ Softening
- ◆ Chemical feed
- ◆ Chlorine removal
- ◆ TOC reduction

## Production

- ◆ 100 - 200,000 GPD RO systems
- ◆ Nanofiltration and desalination options
- ◆ Concentrate recycle
- ◆ Low energy and high output membrane options
- ◆ De-gassification
- ◆ Deionization
- ◆ Electrodeionization

## Storage

- ◆ 20-10k gallon tanks
- ◆ HDPE, Polypropylene, and Stainless Steel
- ◆ Hydropneumatic tank options
- ◆ Standard and cone-bottom
- ◆ Air filtration
- ◆ Level controls
- ◆ Nitrogen blanketing

## Delivery

- ◆ Fixed and variable speed pumps
- ◆ Loop pressure controls
- ◆ UV treatment
- ◆ Sub-micron filtration
- ◆ Redundant pump options
- ◆ DI polishing

## Controls

- ◆ Standard and PLC/touchscreen panels
- ◆ NEMA options
- ◆ Single point electrical connections
- ◆ BAS system integration
- ◆ Remote monitoring

## Helping our clients meet key water quality standards:

- ◆ ASTM D1193, Type I, II, III, IV (lab & industry)
- ◆ AAMI ST-108 (medical device sterile processing)
- ◆ CLSI Clinical Laboratory Reagent Water (CLRW) (medical testing)
- ◆ USP Purified, Sterile, WFI, and more (pharma & medical device production)
- ◆ ASTM D5127 (semiconductor manufacturing)

## Also providing purified water systems for:

- ◆ Humidification
- ◆ Clean steam production
- ◆ Ice and drinking water production
- ◆ Boiler feed
- ◆ Misting equipment
- ◆ Vehicle wash
- ◆ ... And more!



## Experience the WCC difference

- ◆ Easy-to-use system design questionnaires
- ◆ 3D (Revit®) renditions for every system
- ◆ Custom AIA Division 22® specifications
- ◆ Detailed project submittals
- ◆ Project-specific installation diagrams
- ◆ Intuitive, adaptable controls
- ◆ Complete, customized 'Operation and Maintenance' manuals



Visit us  
online

Find detailed product specification info and application design questionnaires at [watercontrolinc.com](http://watercontrolinc.com)



Contact your  
local sales  
representative

Find your WCC authorized rep at [watercontrolinc.com/representativelocator](http://watercontrolinc.com/representativelocator)



Speak directly with  
a design engineer

Call 1-866-405-1268 or email [engineering@watercontrolinc.com](mailto:engineering@watercontrolinc.com)



7150 143rd Ave NW  
Ramsey, MN 55303

[www.watercontrolinc.com](http://www.watercontrolinc.com)  
1-866-405-1268