



High-Purity Water Systems

From Concept to Commissioning

High-purity water made simple

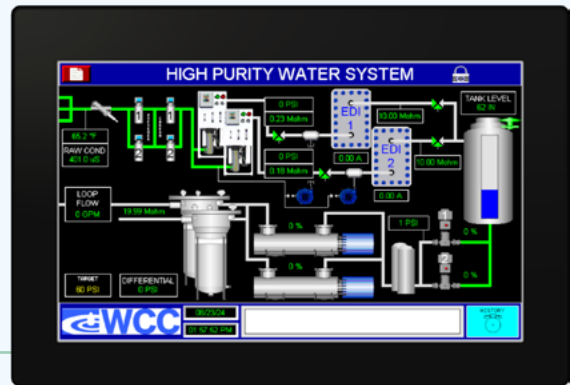
Your one-stop provider for custom-built, high-purity water systems

With over 50 years of experience in high-purity and ultrapure water solutions, WCC knows exactly what's required to get a highly customized system built and operating. We cover everything from initial water analysis, to 3D design, spec writing, ISO9001 fabrication/testing, and on-site commissioning. Our team of experienced engineers and technicians takes the time to ensure that every detail is addressed. This is purified water made simple!

Count on us for:

- ◆ Water testing services
- ◆ Project analysis and design (including site visits)
- ◆ Specification writing and BIM (Revit™) renditions
- ◆ Detailed project submittals
- ◆ Quality system fabrication and testing
- ◆ Delivery, startup, and commissioning services
- ◆ Service and maintenance

We understand the complex commercial construction process, including the extensive documentation required to bring your project to fruition. We also offer a wide array of BAS integration options.



Standard Assure IQ™ Controller

- ◆ Programmable Logic Controller
- ◆ Animated HMI touchscreen
- ◆ Component status and setpoint
- ◆ Multiple user logins
- ◆ Electronic maintenance reminders
- ◆ Plug-and-play BAS integration (BACnet, Modbus, and other protocols)

2000 gallons per day RO/DI system

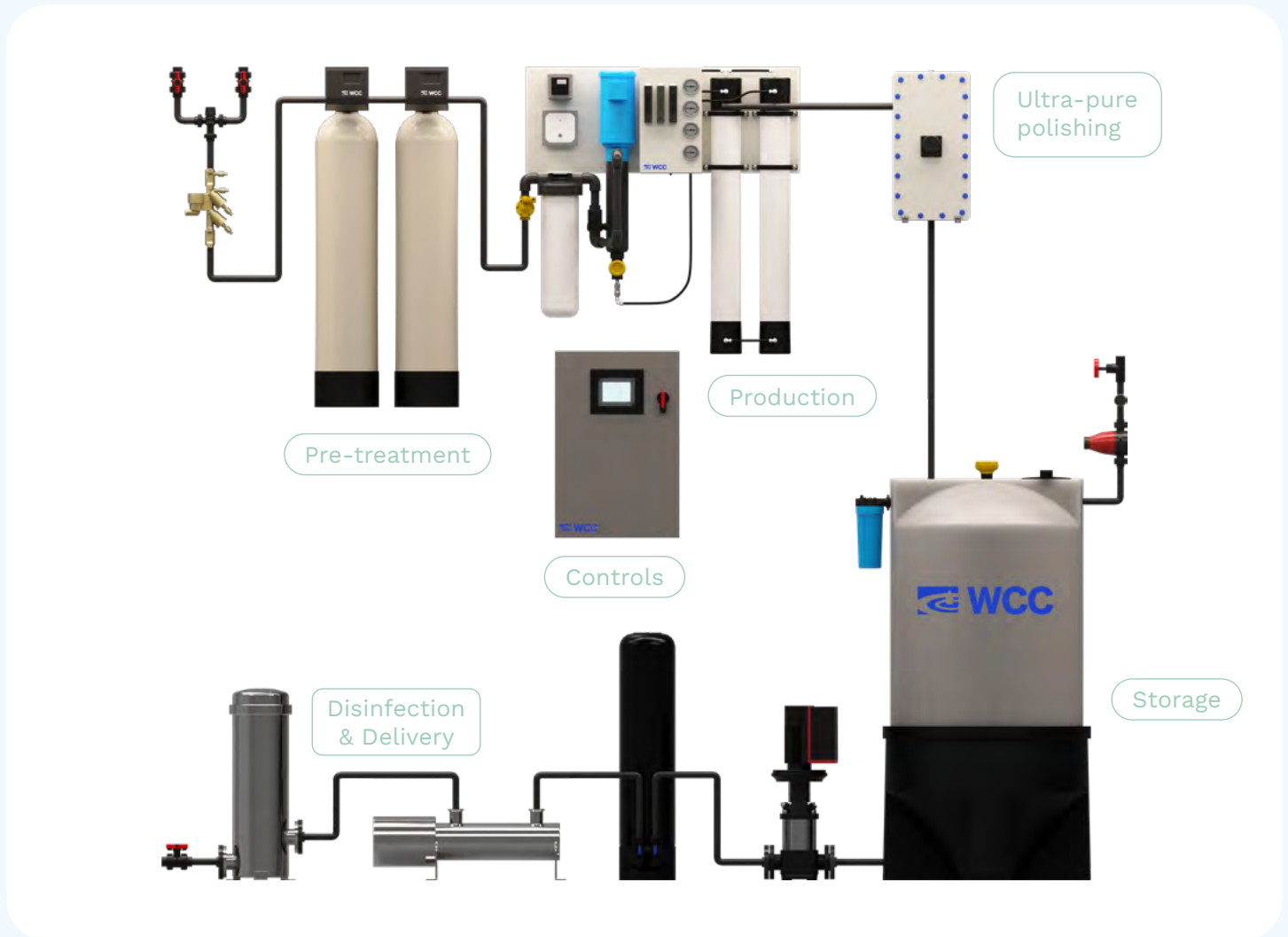


Original plan design



Actual system

Complete high-purity water packages



Pre-treatment

- ◆ Temperature regulation
- ◆ Backflow prevention
- ◆ Softening
- ◆ Chemical feed
- ◆ Chlorine removal
- ◆ TOC reduction

Production

- ◆ 100 - 200,000 GPD RO systems
- ◆ Nanofiltration and desalination options
- ◆ Concentrate recycle
- ◆ Low energy and high output membrane options
- ◆ De-gasification
- ◆ Deionization
- ◆ Electrodeionization

Storage

- ◆ 20-10k gallon tanks
- ◆ HDPE, Polypropylene, and Stainless Steel
- ◆ Hydropneumatic tank options
- ◆ Standard and cone-bottom
- ◆ Air filtration
- ◆ Level controls
- ◆ Nitrogen blanketing

Delivery

- ◆ Fixed and variable speed pumps
- ◆ Loop pressure controls
- ◆ UV treatment
- ◆ Sub-micron filtration
- ◆ Redundant pump options
- ◆ DI polishing

Controls

- ◆ Standard and PLC/ touchscreen panels
- ◆ NEMA options
- ◆ Single point electrical connections
- ◆ BAS system integration
- ◆ Remote monitoring

Helping our clients meet key water quality standards:

- ◆ ASTM D1193, Type I, II, III, IV (lab & industry)
- ◆ AAMI ST-108 (medical device sterile processing)
- ◆ CLSI Clinical Laboratory Reagent Water (CLRW) (medical testing)
- ◆ USP Purified, Sterile, WFI, and more (pharma & medical device production)
- ◆ ASTM D5127 (semiconductor manufacturing)



Also providing purified water systems for:

- ◆ Humidification
- ◆ Clean steam production
- ◆ Ice and drinking water production
- ◆ Boiler feed
- ◆ Misting equipment
- ◆ Vehicle wash
- ◆ ... And more!



Experience the WCC difference

- ◆ Easy-to-use system design questionnaires
- ◆ 3D (Revit®) renditions for every system
- ◆ Custom AIA Division 22® specifications
- ◆ Detailed project submittals
- ◆ Project-specific installation diagrams
- ◆ Intuitive, adaptable controls
- ◆ Complete, customized 'Operation and Maintenance' manuals



Visit us
online

Find detailed product specification info and application design questionnaires at watercontrolinc.com



Contact your
local sales
representative

Find your WCC authorized rep at watercontrolinc.com/representativelocator



Speak directly with
a design engineer

Call 1-866-405-1268 or email engineering@watercontrolinc.com



7150 143rd Ave NW
Ramsey, MN 55303

www.watercontrolinc.com
1-866-405-1268